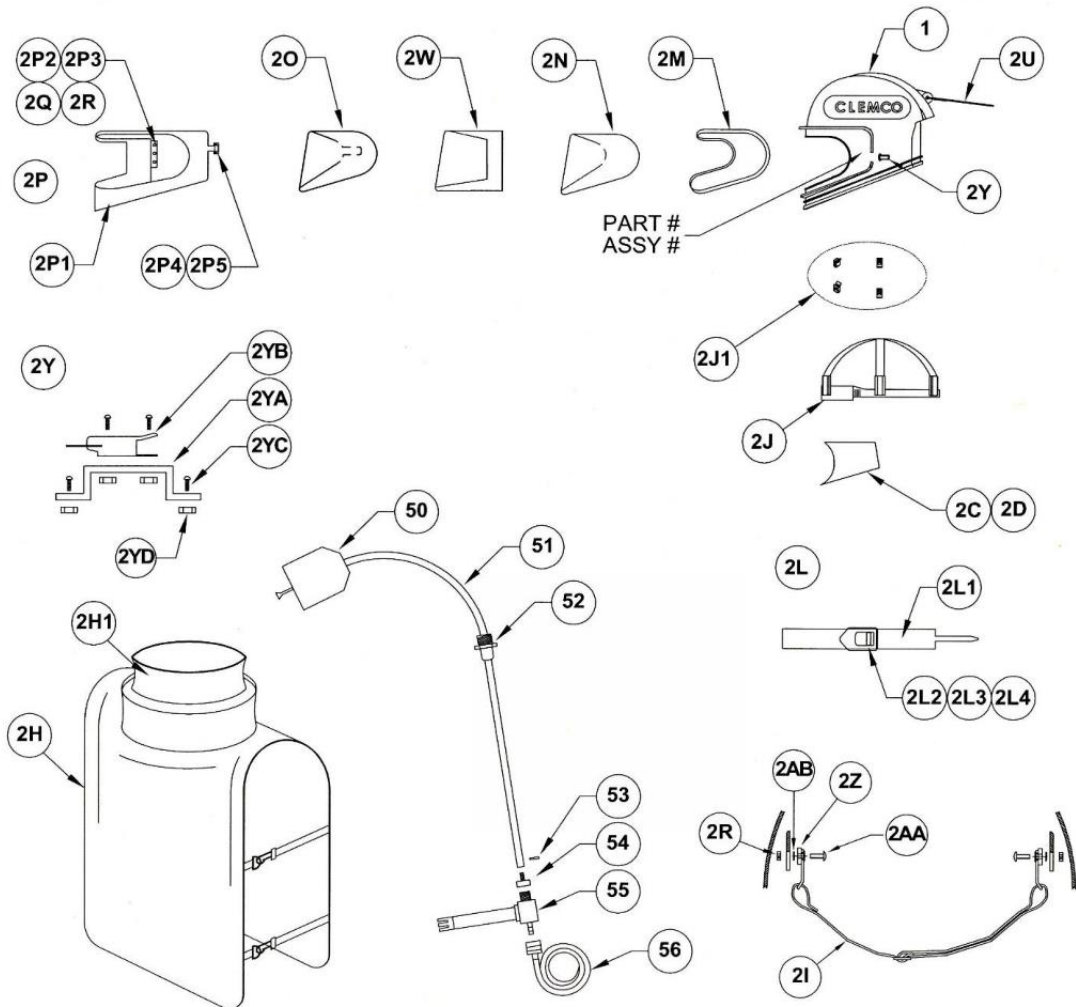


Split tegning til Apollo 600 blæsehjelm - 24243



<b>Pos.</b>	<b>Part-No.</b>	<b>Model</b>
1	23800 A	Outer helmet shell A-600
2C	04491 I	Acoustical foam r.h.
2D	04492 I	Acoustical foam l.h.
2H	23815 D	Nylon cape A-600
	24310D	Leather cape A-600
	24405D	Rubber Cape 4436 for A 600
	24406D	ASS- Cape 4436 RA for A-600
2H1	08740 I	Inner collar for A-60 and A-600
2I	04460 I	Chinstrap
2J	23806 I	Suspension A-600
2J1	23821 I	Clip A-600 head suspension (4 units/head suspension necessarily)
2L	23801 D	A-600 cape attachment
<b>Pos.</b>	<b>Part-No.</b>	<b>Model</b>
2L3	23803 D	A-600 draw latch window frame
2L4	24245 D	Screw M6x8 for latch
2M	23819 D	A-600 window gasket
2N	24308 D	Inner lens (1mm Polycarbonate; 5 pcs.)
2O	04361 I	Perforated cover lens 0,2mm (25 pcs.)
2P	24012 D	A-600 window frame complete
2P1	23810 D	A-600 window frame black
2P2	23812 D	A-600 hinge black
2P3	99269 D	Rivet (base)
2P4	04454 D	Rivet (head)
2P5	08738 I	Strike for window frame
2Q	23805 I	Screw for A-600 (6/32 x 1/2")
2R	08924 I	Nut 3/8"
2W	04373 I	Outer lens 0,5mm (25 PK)
2Z	90266 D	Holder chinstrap
2AA	23805 I	Screw (6/32 x 1/2")
2AB	23817 I	External tooth lock washer

2Y	24316D	A-600 Latch base complete
2YA	23813 D	A-600 Latch base
2YB	04449 I	Draw latch
2YC	04438 I	Screw for A-600 (6/32 x 1/2")
2YD	08924 I	Nut #6
50	100913	A-600 CE air indicator complete with hose
50	100915	A-600 air indicator
51	100914	Air hose black 1m
52	100917	A-600 high-strength cable gland
53	24263 D	Hose shell for 9mm air hose
54	01030 D	Hose connection
55	100042	Air control valve complete with belt
56	100421	5m Air Supply Hose 9mm with safety coupling and socket (CE-approved)
	100406	10m Air Supply Hose 9mm with safety coupling and socket (CE-approved)
	100404	20m Air Supply Hose 9mm with safety coupling and socket (CE-approved)
	100405	40m Air Supply Hose 9mm with safety coupling and socket (CE-approved )
	100403	Safety coupling 9mm (CE-approved)
	100380	Ear plugs
	10533 D	Owner's manual
	100586	Hood (Polypropylene)
	24395D	Mounting-tool for inner lens