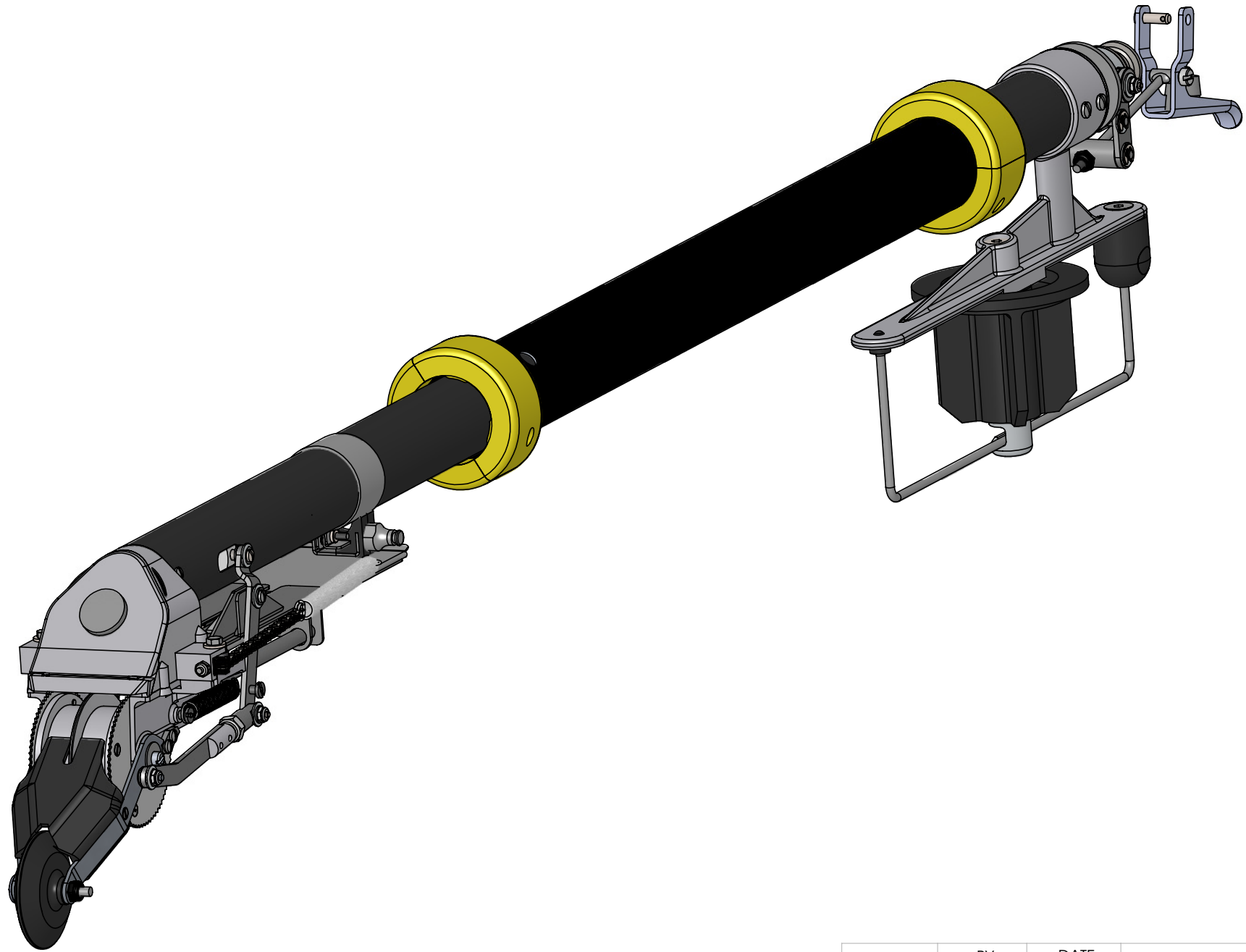
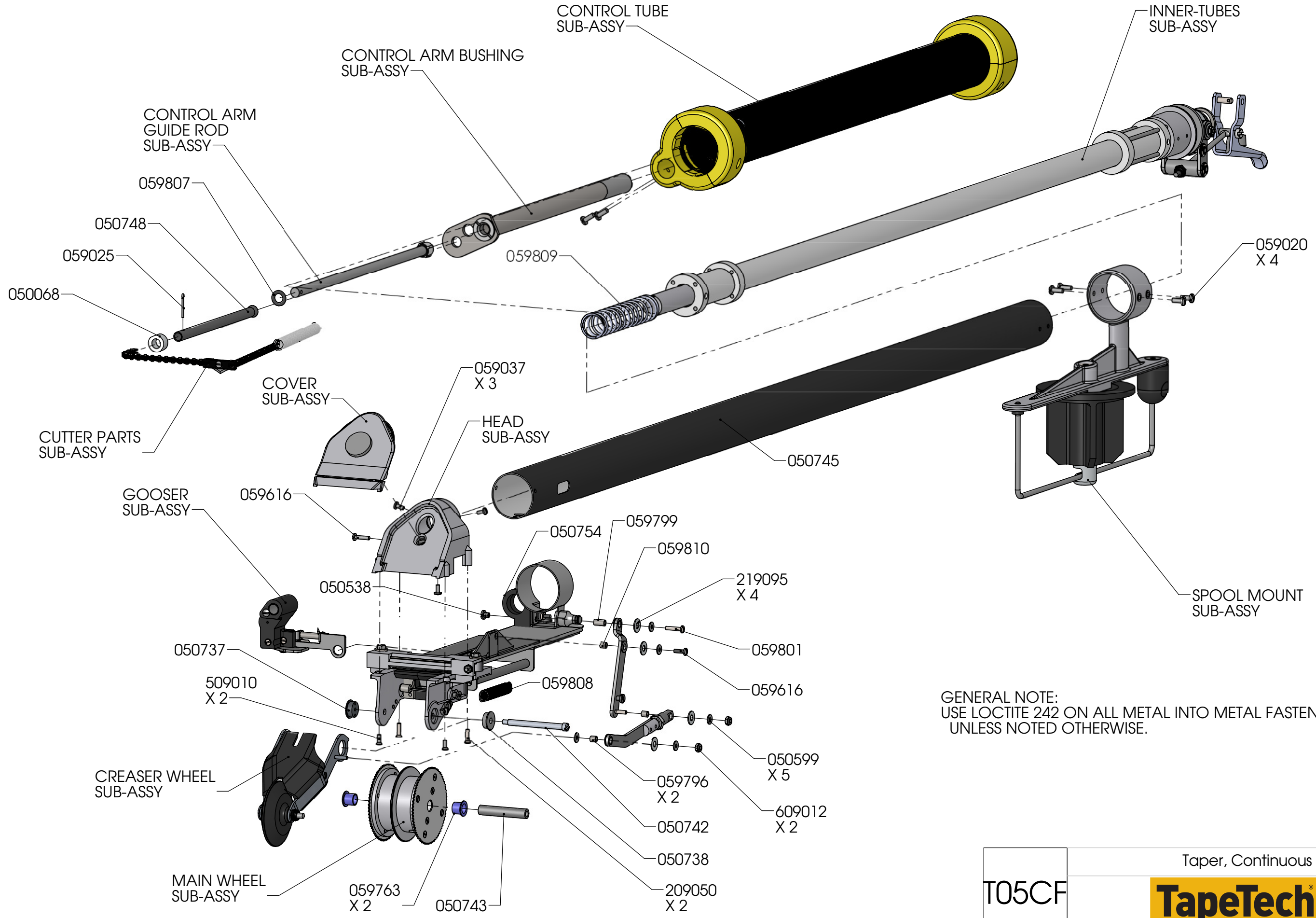


REVISIONS				
ECN	REV.	DESCRIPTION	DATE	BY
	B	MISC UPDATES	06/14	MWJ



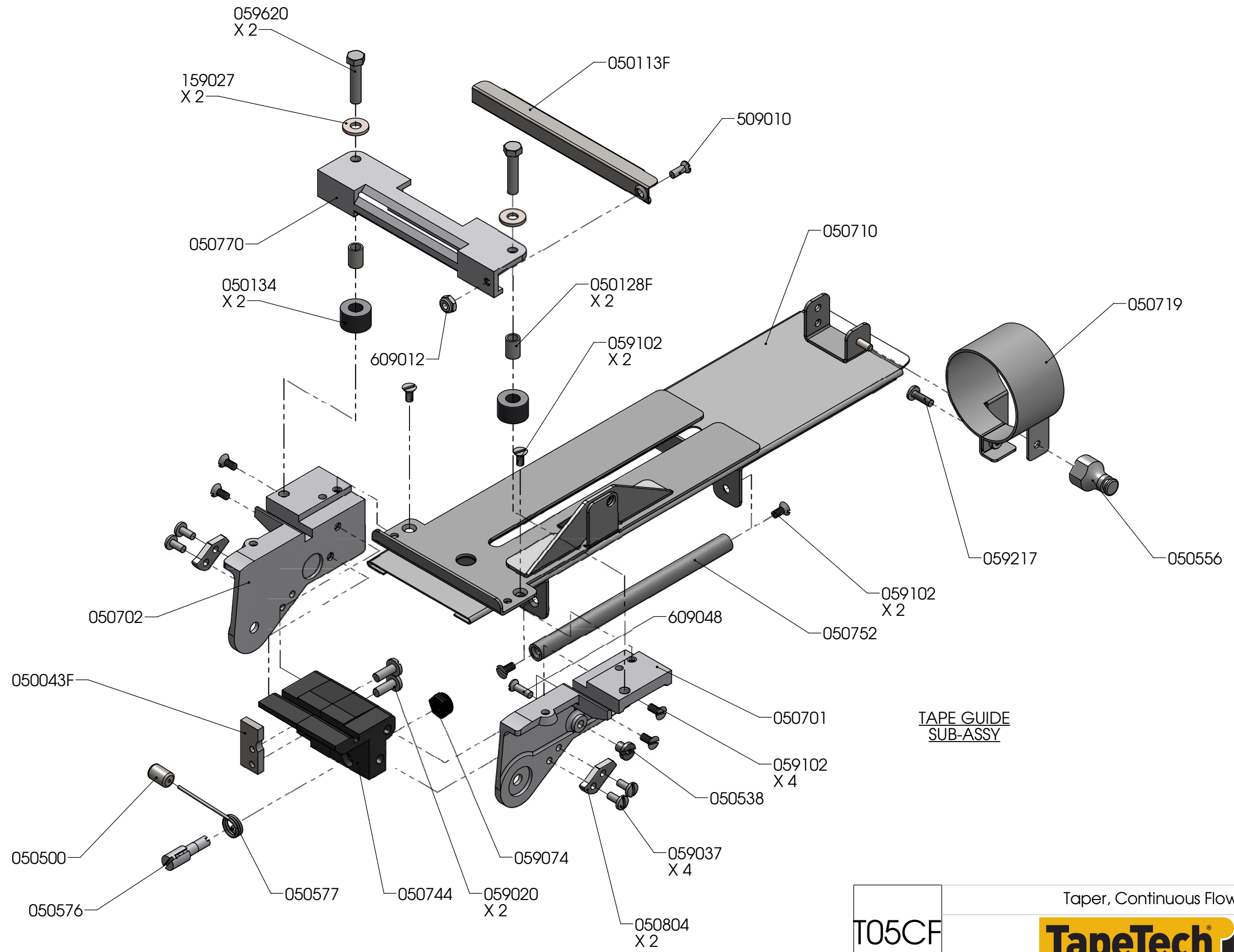
	BY	DATE
DRAWN	MWJ	07/10
CHECKED	X.X.X.	##/##
ALL DIMENSIONS IN INCHES UNLESS OTHERWISE NOTED		
TOLERANCES UNLESS NOTED		
.XX ± 0.010"		ANGULAR ±.5°
.XXX ± 0.005"		
MATERIAL: XXXXXX		

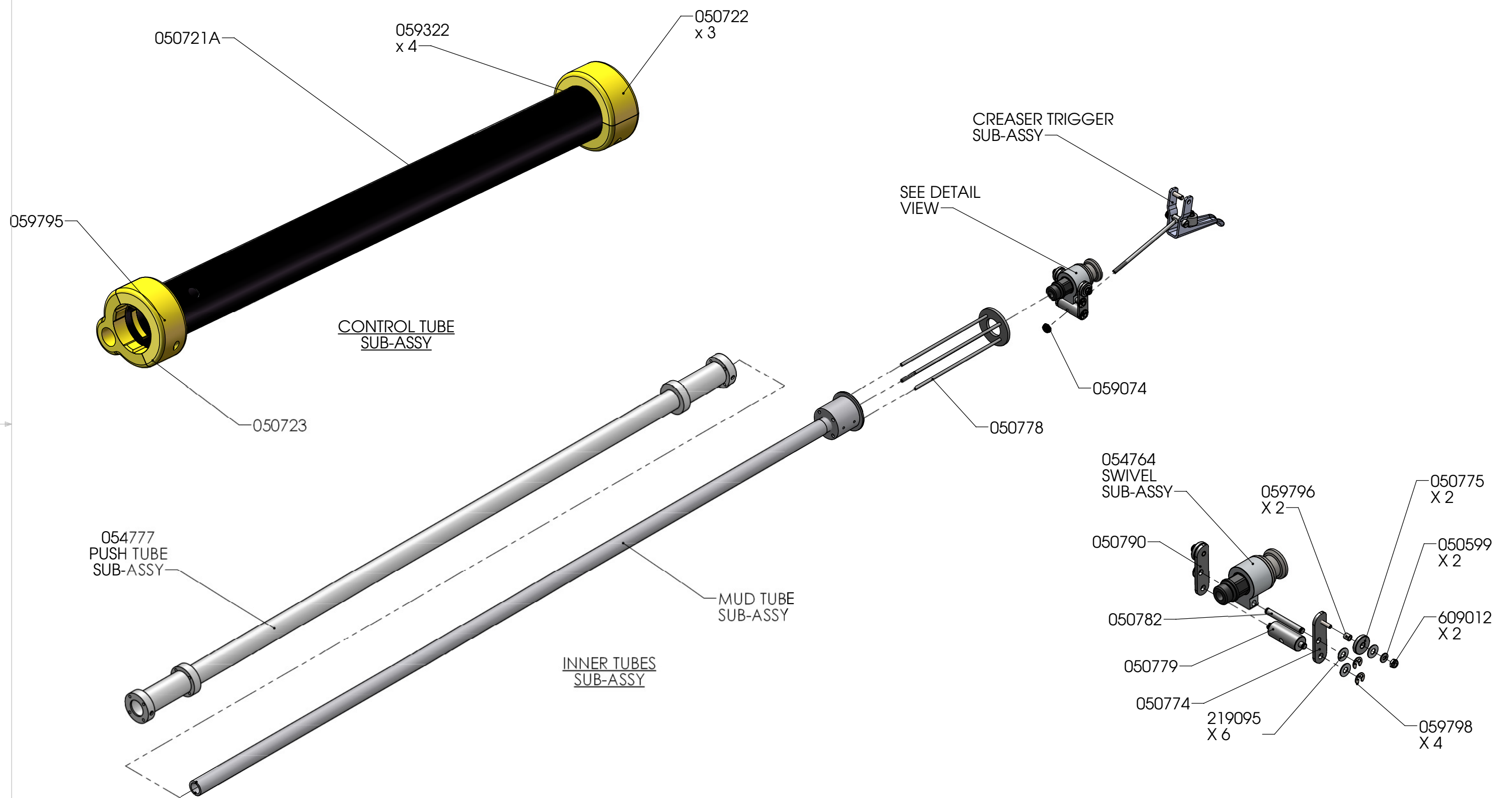
Taper, Continuous Flow			
TapeTech PROFESSIONAL DRYWALL FINISHING TOOLS			
SIZE B	SCALE = 1:12	DWG. NO. T05CF	REV. B
ASSEMBLY REF. NO. ## Ass'y		SHEET 1 of 9	



GENERAL NOTE:
USE LOCTITE 242 ON ALL METAL INTO METAL FASTENERS
UNLESS NOTED OTHERWISE.

T05CF	Taper, Continuous Flow	
		
	PROFESSIONAL DRYWALL FINISHING TOOLS	REV. B





T05CF	Taper, Continuous Flow	
	 <small>PROFESSIONAL DRYWALL FINISHING TOOLS</small>	REV. B

APPLY ADHESIVE, PRESS TOGETHER
WITH PROPER ORIENTATION
PER WORK INSTRUCTIONS

APPLY THREAD
SEALANT AND
TIGHTEN PER
WORK INSTRUCTIONS

050777

054777
PUSH TUBE
SUB-ASSY

COMPONENTS NOT SOLD SEPARATELY

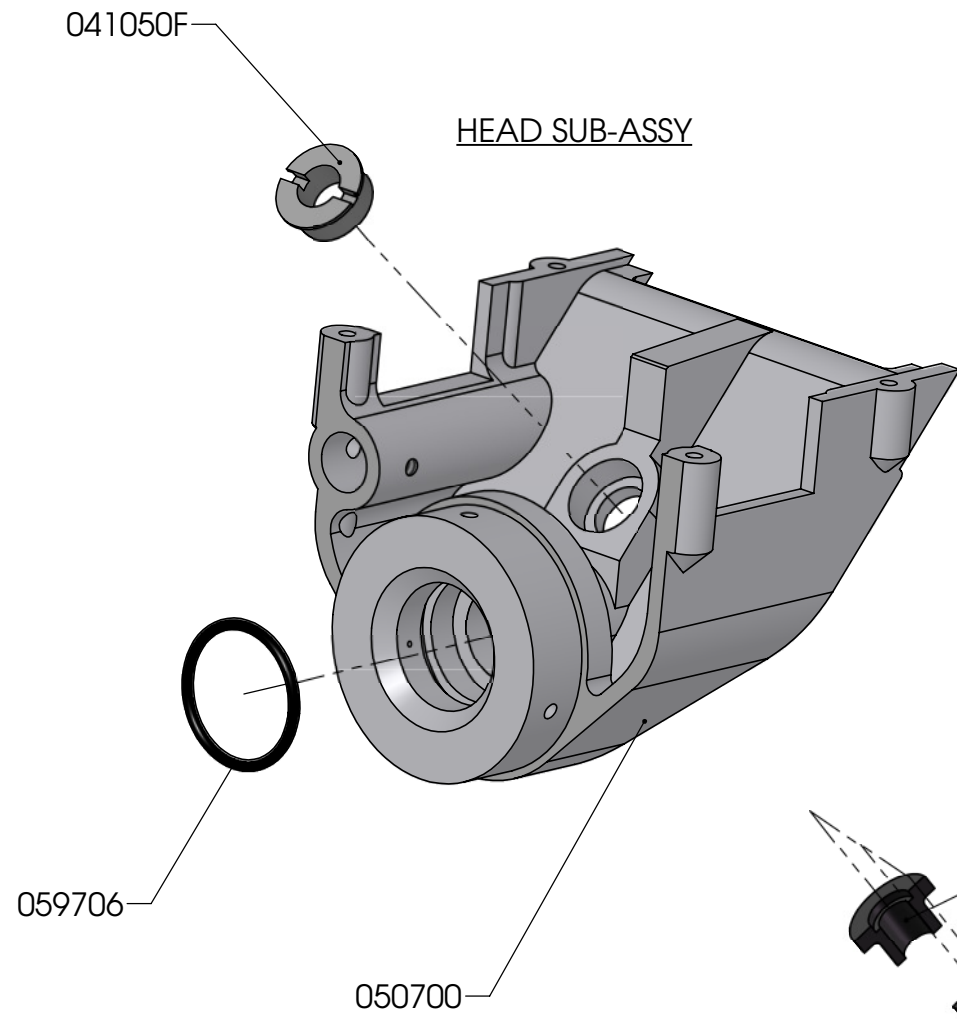
050712

050713

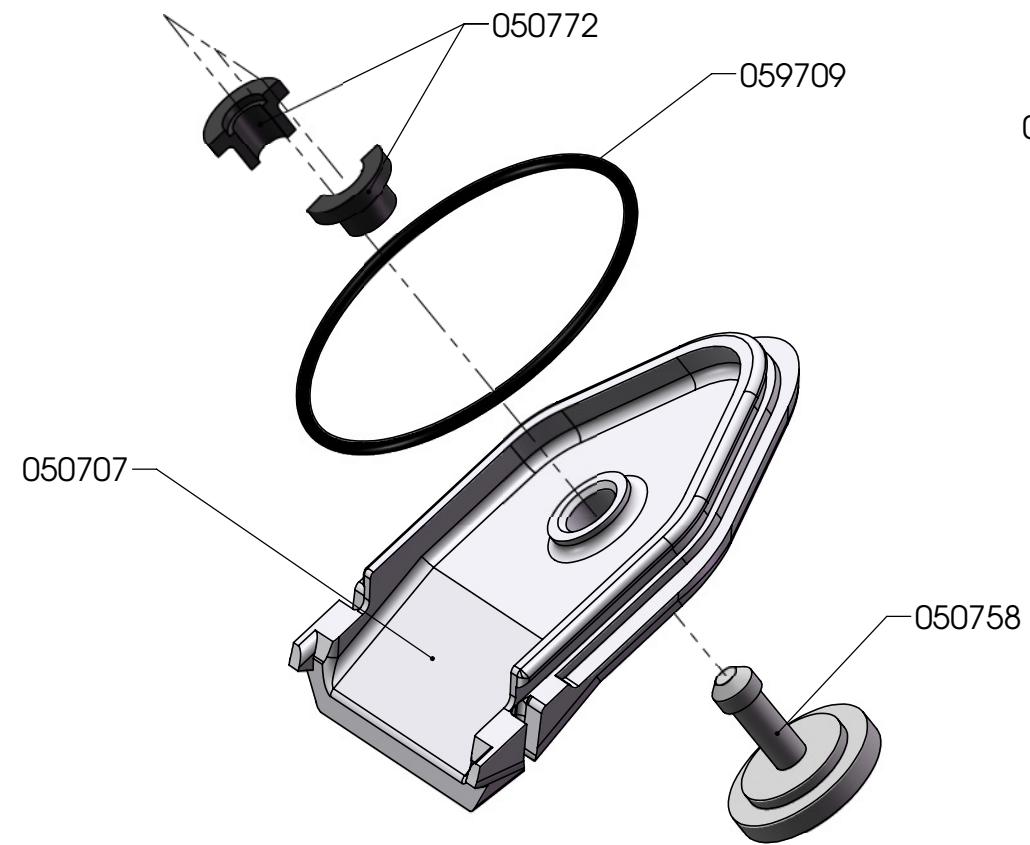
MUD TUBE
SUB-ASSY

050781
X 2

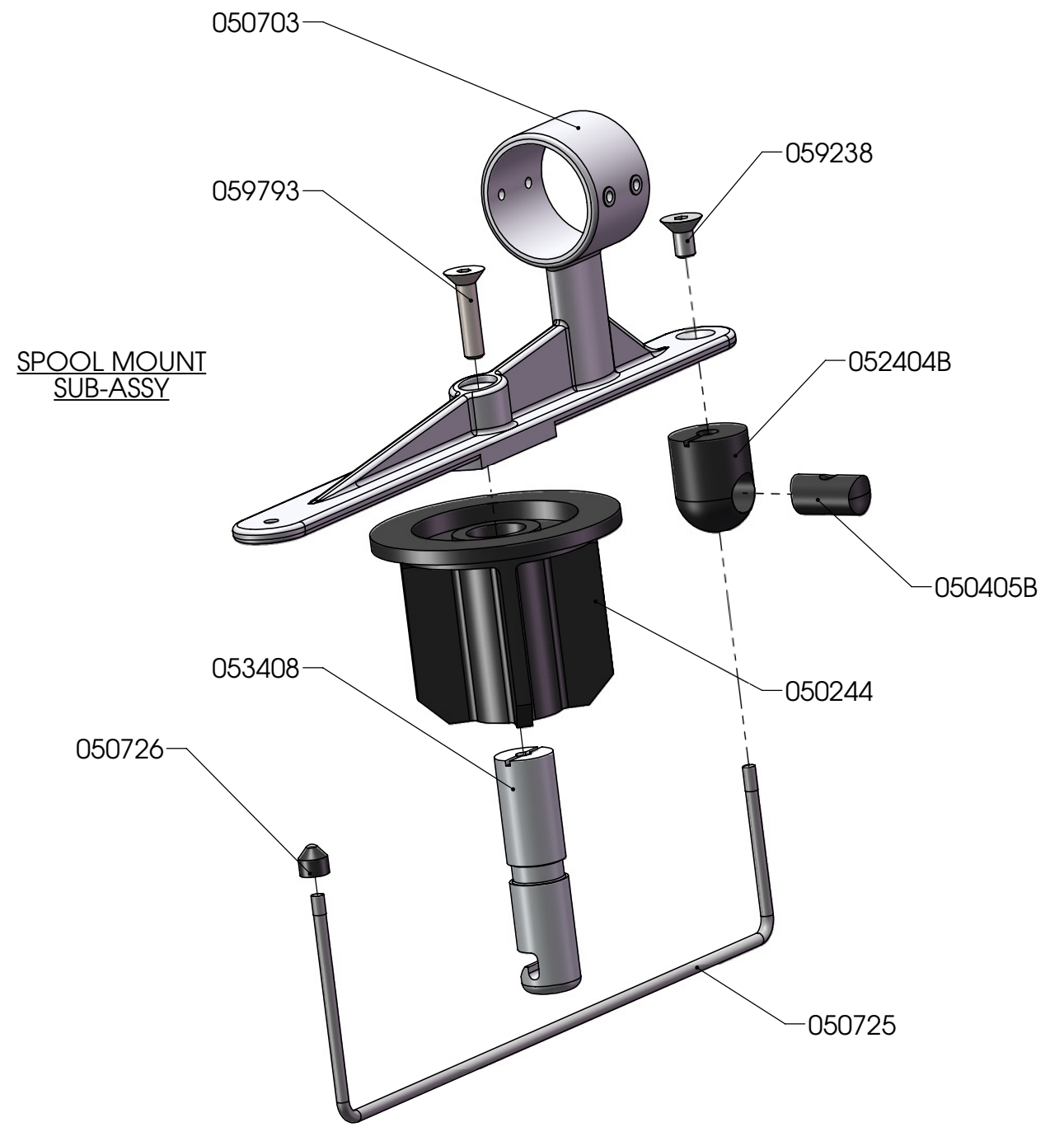
T05CF	Taper, Continuous Flow	
	 PROFESSIONAL DRYWALL FINISHING TOOLS	REV. B



HEAD SUB-ASSY

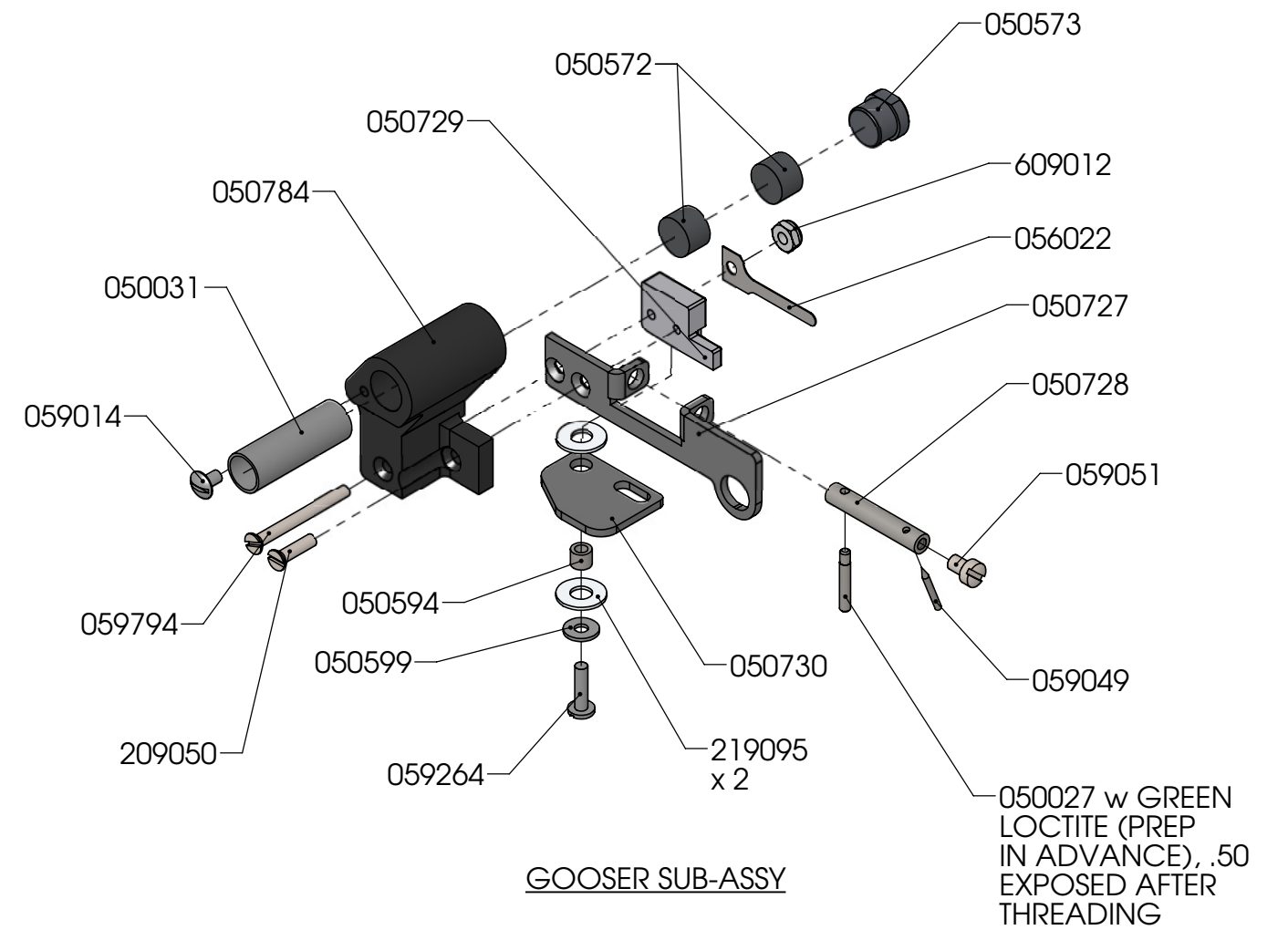
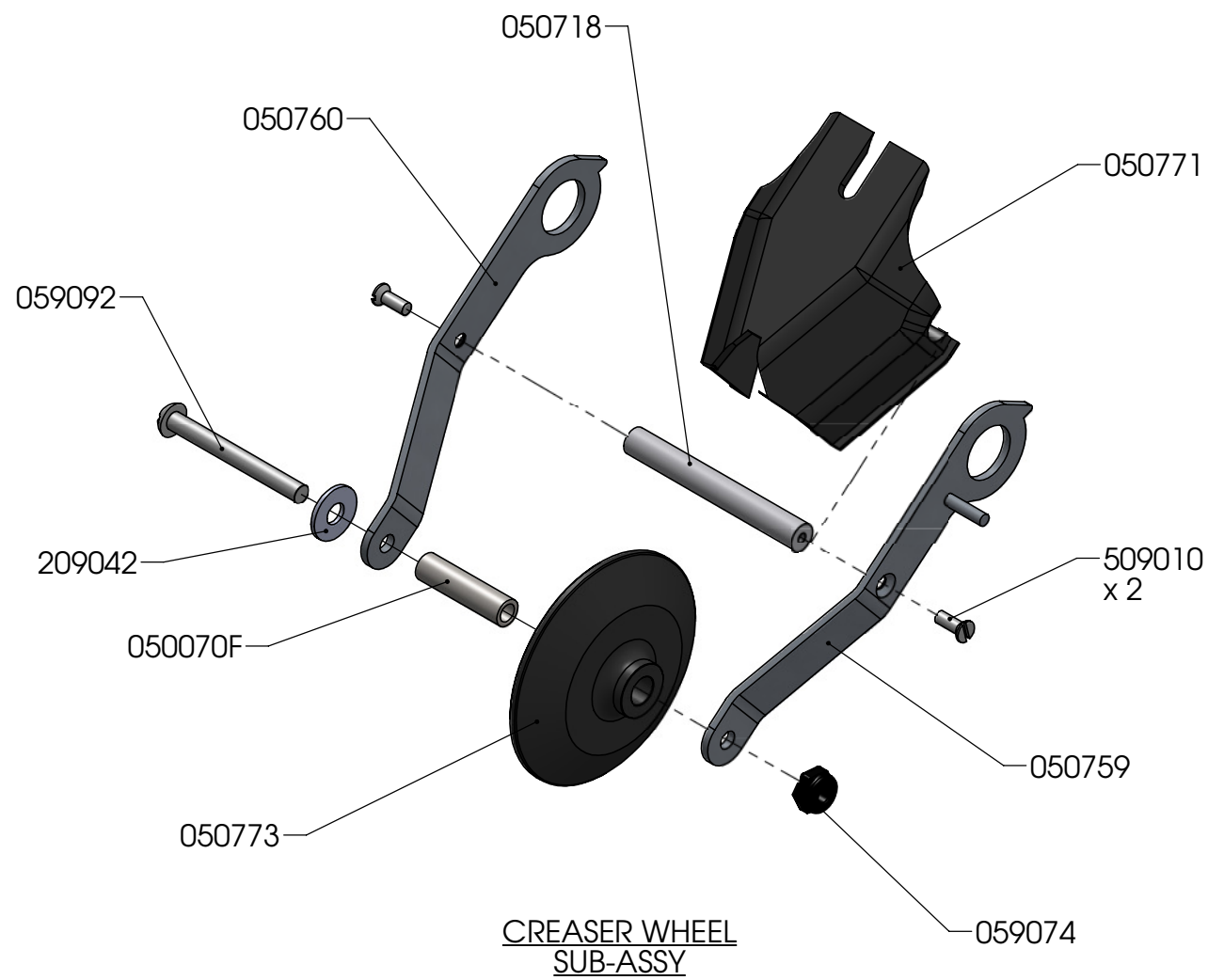


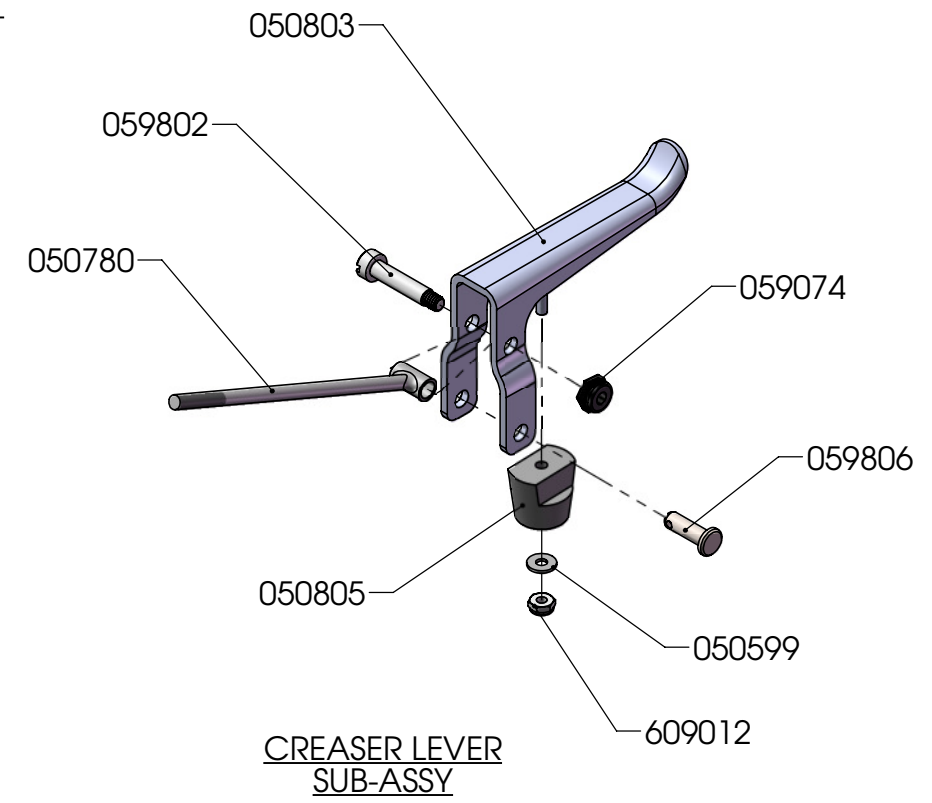
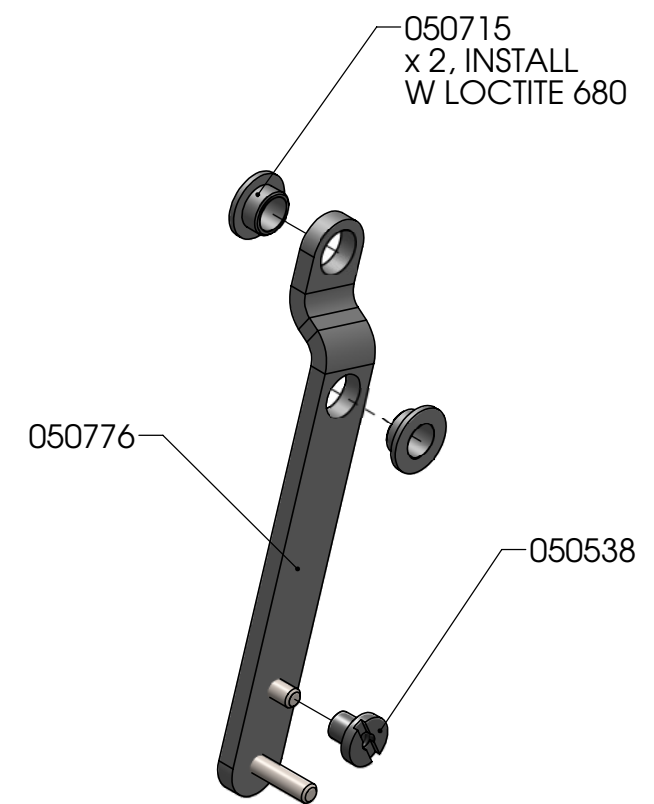
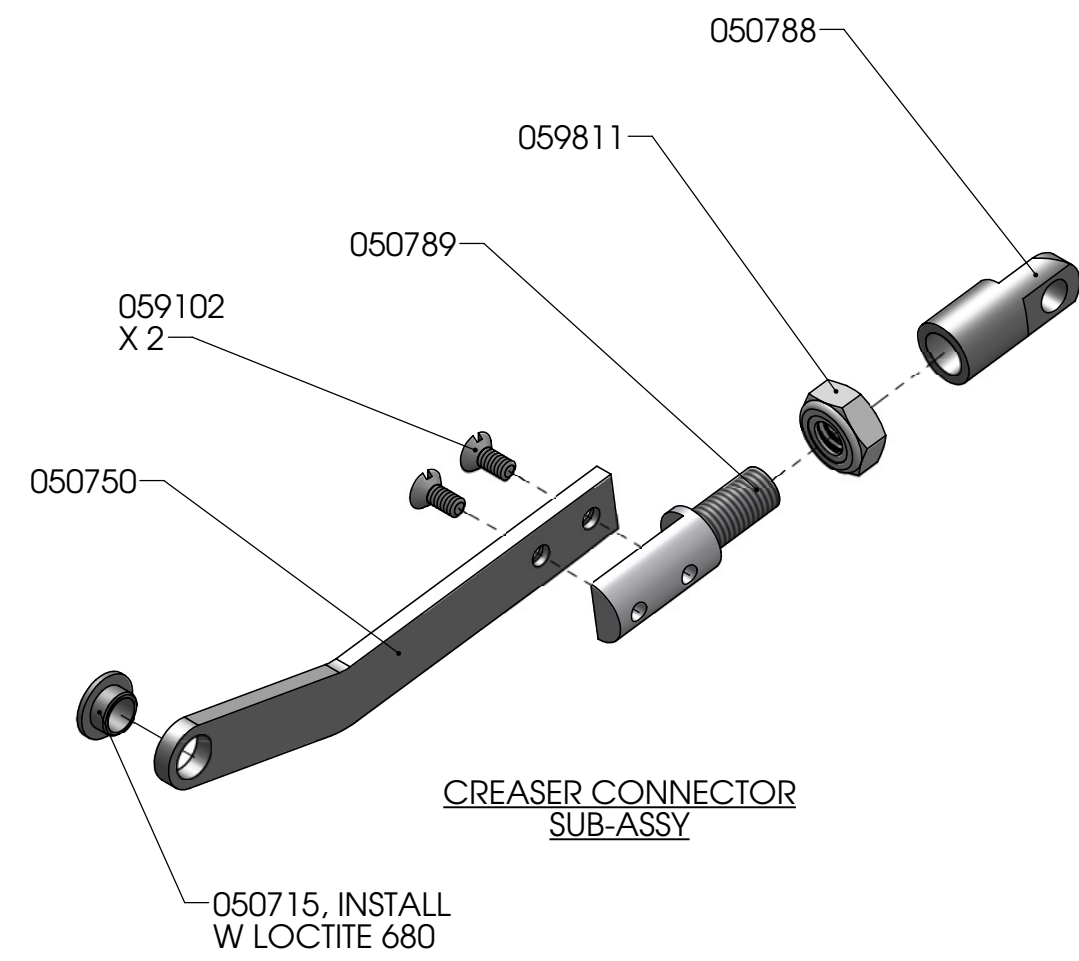
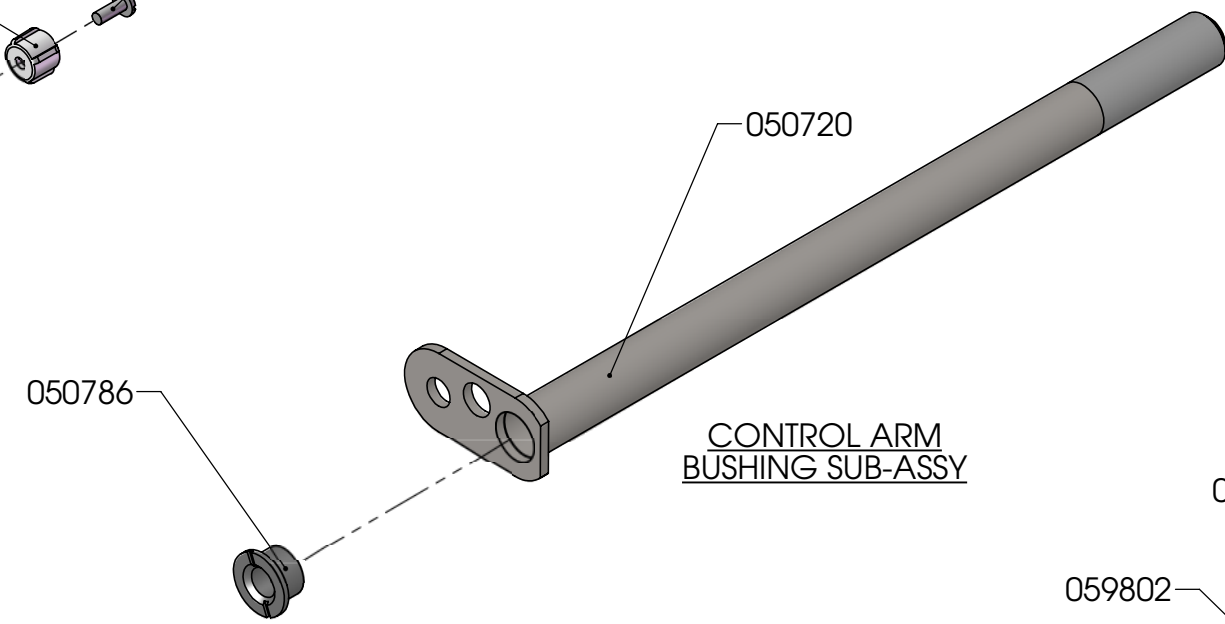
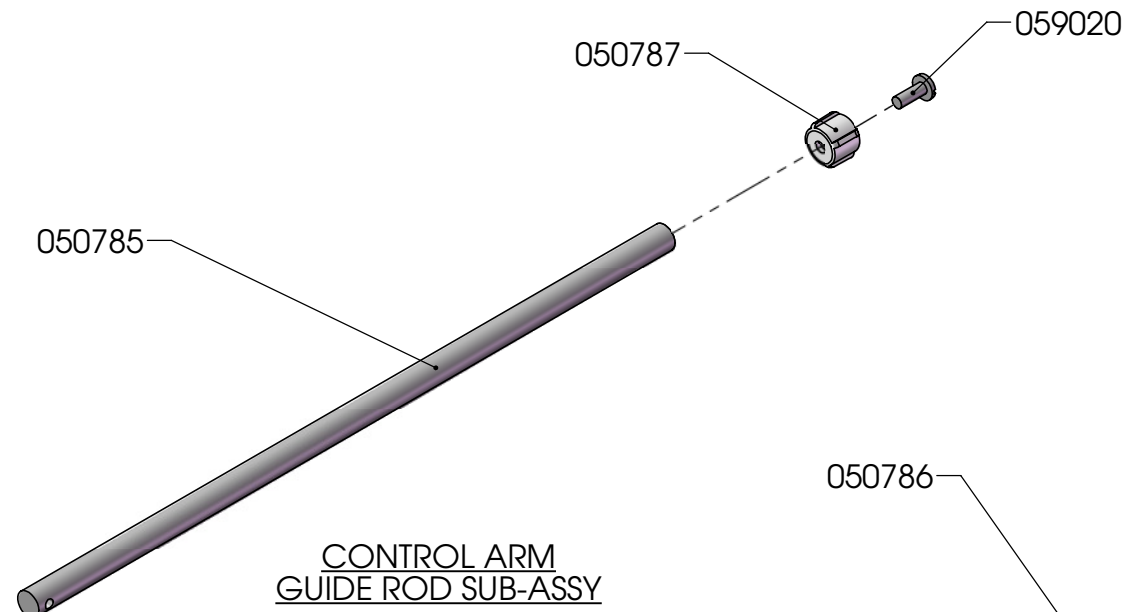
COVER SUB-ASSY



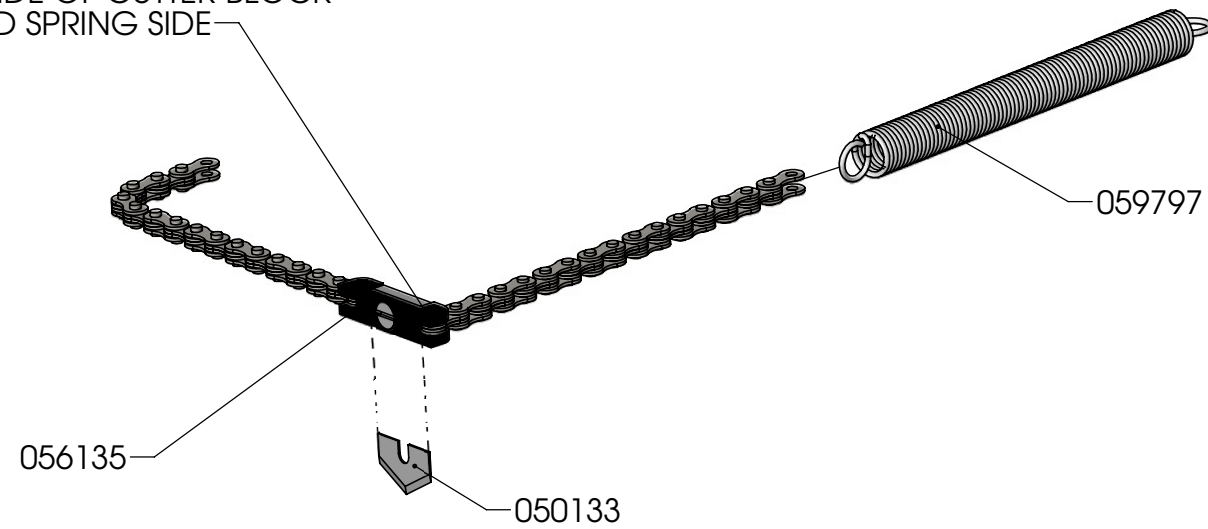
SPOOL MOUNT SUB-ASSY

T05CF	Taper, Continuous Flow	
		
	PROFESSIONAL DRYWALL FINISHING TOOLS	REV. B

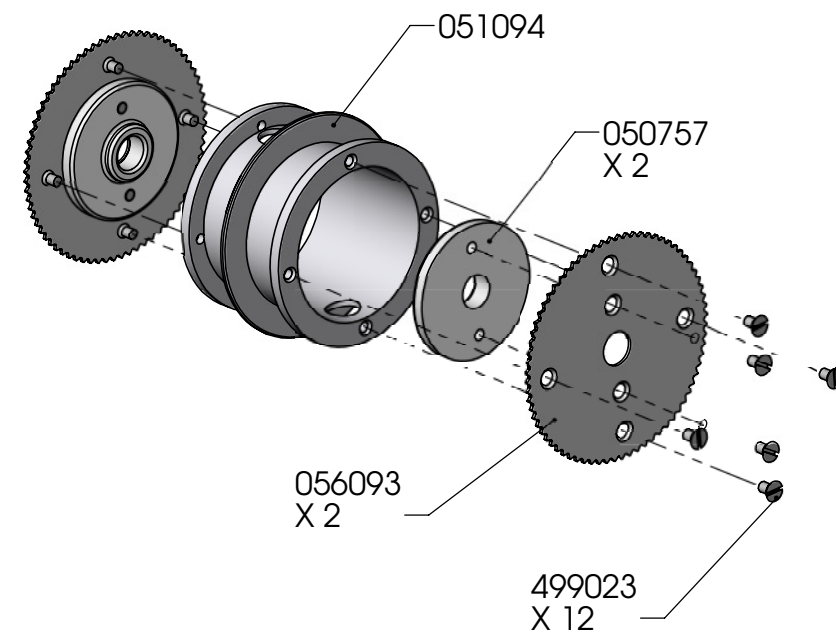




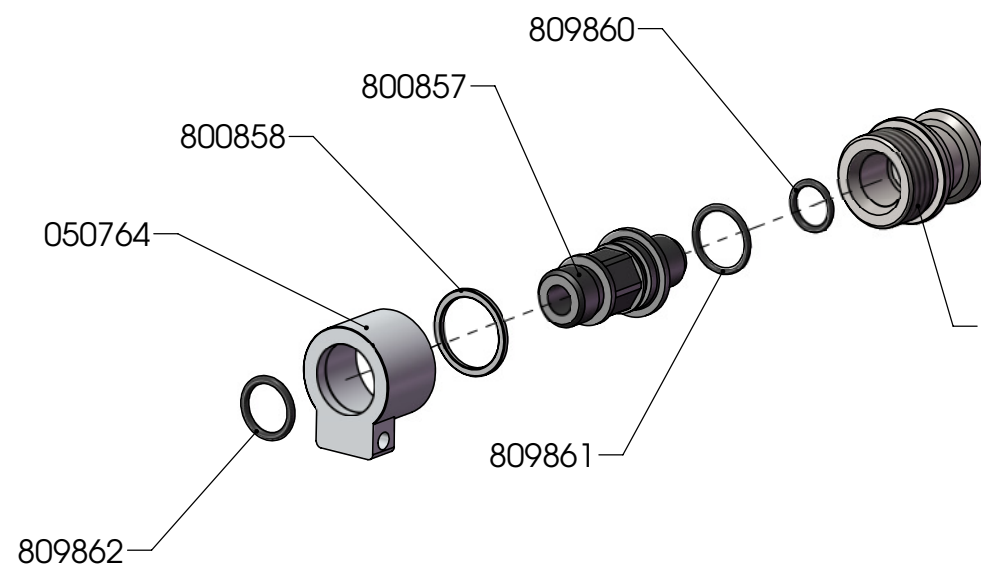
LONG SIDE OF CUTTER BLOCK
TOWARD SPRING SIDE



CUTTER PARTS SUB-ASSY



MAIN WHEEL SUB-ASSY



050764
SWIVEL SUB-ASSY

COMPONENTS NOT SOLD SEPARATELY

800856, PARTIALLY THREAD
ONTO 050764, APPLY LOCTITE 680
TO EXPOSED THREADS, THEN FULLY
THREAD PARTS TOGETHER TO COMPLETE
ASSEMBLY

T05CF	Taper, Continuous Flow	
	 PROFESSIONAL DRYWALL FINISHING TOOLS	REV. B

Part Number	Description	Quantity Each
041050F	Threaded Insert	1
050027	Lock, Needle Holder	1
050031	Bushing, Gooser	1
050043F	Anvil	1
050068	Gooser & Cutter Chain Stop	1
050070F	Creaser Axle	1
050113F	Cutter Block Tube	1
050128F	Bushing, Chain Roller	2
050134	Chain Roller	2
050244	Spool	1
050405B	Keeper Axle, Black	1
050500	Brake Roller	1
050538	Creaser Spring Anchor	3
050556	Cutter Spring Stud	1
050572	Magnet	2
050573	Magnet Cap	1
050576	Brake Spring Mount	1
050577	Brake Torsion Spring	1
050594	Pivot Bushing, Short	1
050599	Main Shaft Washer	9
050700	Taper Head	1
050701	Left Side Plate	1
050702	Right Side Plate	1
050703	Spool Mount	1

Part Number	Description	Quantity Each
050707	Cover	1
050710	Tape Guide	1
050712	Main Tube End Plug	1
050713	Inner Mud Tube	1
050715	Link Bushing	3
050718	Creaser Spacer	1
050719	Main Tube Band Assy	1
050720	Control Arm Assy	1
050721A	Control Tube, Hard Black Anodized	1
050722	Control Tube Flange	3
050723	Flange for Control Arm	1
050725	Spool Mount Retaining Wire	1
050726	Spool Mount Retaining Wire Anchor	1
050727	Gooser	1
050728	Needle Holder	1
050729	Gooser Spring Mount	1
050730	Needle Disengager	1
050737	Creaser Axle, Threaded	1
050738	Creaser Axle	1
050742	Main Wheel Axle Screw	1
050743	Main Wheel Axle	1
050744	Side Plate Spacer	1
050745A	Main Tube, Hard Black Anodized	1
050748	Cutter Link Tube	1

Part Number	Description	Quantity Each		Part Number	Description	Quantity Each
050750	Creaser Connector	1		050787	Slider	1
050752	Gooser Guide Rod	1		050788	Creaser Connector Adjuster	1
050754	Control Arm Guide	1		050789	Creaser Connector Adjuster End	1
050757	Main Wheel Hub	2		050790	Creaser Cam Plate, Mirror	1
050758	Thumb Screw	1		050803	Creaser Trigger	1
050759	Creaser Frame Half	1		050804	Creaser Stop	2
050760	Creaser Frame Half, Mirror	1		050805	Trigger Stopper	1
050764	Swivel Retaining Ring	1		051094	Spool	1
050770	Cutter Frame	1		052404B	Keeper Yoke	1
050771	Creaser Tape Guide	1		053408	Spool Post, Slotted	1
050772	Keeper Half	2		056022	Gooser Spring	1
050773	Creaser Wheel	1		056093	Main Wheel	2
050774	Creaser Cam Plate	1		056133	Pyramid Blade, SST	1
050775	Cam Pivot Roller	2		056133	Pyramid Blade, SST	1
050776	Creaser Pivot Link	1		056135	Cutter Chain Assembly, SST.	1
050777	Push Tube	1		059014	Screw 4-40 X 3/16 Truss Hd. S.S	1
050778	Swash Plate	1		059020	Screw 6-32 X 3/8 Bind Hd.	8
050779	Cam Pivot Bar	1		059025	Cotter Pin. 5/64 X 1/2 S.S	1
050780	Connector	1		059037	Screw 4-40 X 1/4 Bind Hd. S.S	3
050781	Creaser Slider	2		059049	Needle, Gooser	1
050782	Cam Pivot Axle	1		059049	Needle, Gooser	1
050784	Gooser Body	1		059051	Screw 6-32 X 3/16 Fil. Hd. S.S	1
050785	Control Arm Guide Rod	1		059074	Stopnut, 8-32 Hex, Elas., S.S.	3
050786	Guide Bushing	1		059074	Stopnut, 8-32 Hex, Elas., S.S.	1

Part Number	Description	Quantity Each	Part Number	Description	Quantity Each
059092	Screw 8-32 X 1-1/2, Slotted Rd. Hd., S.S	1	059809	Spring, LEE LC067K10S	1
059102	Screw 4-40 X .225/.235 Fl.Hd.SST.	10	059810	Spacer, Creaser Pivot, McM 92320A691	1
059238	1/4-20 X 1/2 Screw Fl Hd Socket Cap	1	059811	Jam Nut 1/4-20	1
059264	4-40 X 7/16 Binding Head Screw	2	159027	Washer, #8, No 807, SST	2
059322	Screw, 4-40 X 7/8 Fl. Hd.	4	209042	#10 Brass Washer	1
059616	Screw, 4-40 x 1/2 Binding Hd, SST	1	209050	4-40 x 7/16 Slotted FL. Head, SS	3
059616	Screw, 4-40 x 1/2 Binding Hd, SST	1	219095	Washer	12
059620	Screw, 8-32 x 3/4 Hex Head, SST	2	499023	4-40 X 3/16 Flat Head Screw 18-8	12
059706	O-ring, 17.5mmID, 1.5mmwidth, Buna	1	509010	Screw: 4-40 X 5/16 Fl. Hd. S.S.	5
059709	O-ring, -033, Buna	1	609012	Stopnut 4-40 S.S	6
059763	Nyliner, 5L5F-642	2	609048	4-40X3/8 Flat Head S.S. Screw	1
059793	Screw, 1/4-20 x 1-1/8 FH Soc, SST	1	800856	Stud, Swivel	1
059794	Screw, 4-40 x 1-1/8 Fl Hd Slotted, SST	1	800857	Adapter, Swivel	1
059795	Screw, #4 x 1/4 Lg Thd Forming, SST	1	800858	Thrust Washer	1
059796	Spacer .188, SST, Ref McM-Carr 92320A689	4	809860	O-Ring, -013	1
059797	Spring, LEE LE045D13S	1	809861	O-Ring, -016	1
059798	E-Ring, Ext, .125/.127 Groove, SST	4	809862	O-Ring, -907	1
059799	Spacer .375, SST, Ref McM-Carr 92320A695	1			
059801	Screw, 4-40 x 9/16, Bind Hd, SST	1			
059802	ShoulderScr, 3/16 x 1", Slotted, SST	1			
059806	Trigger Attachment Pin	1			
059807	O-ring, Gooser Stop, -109 Buna	1			
059808	Spring, McM-Carr 9065K259	1			